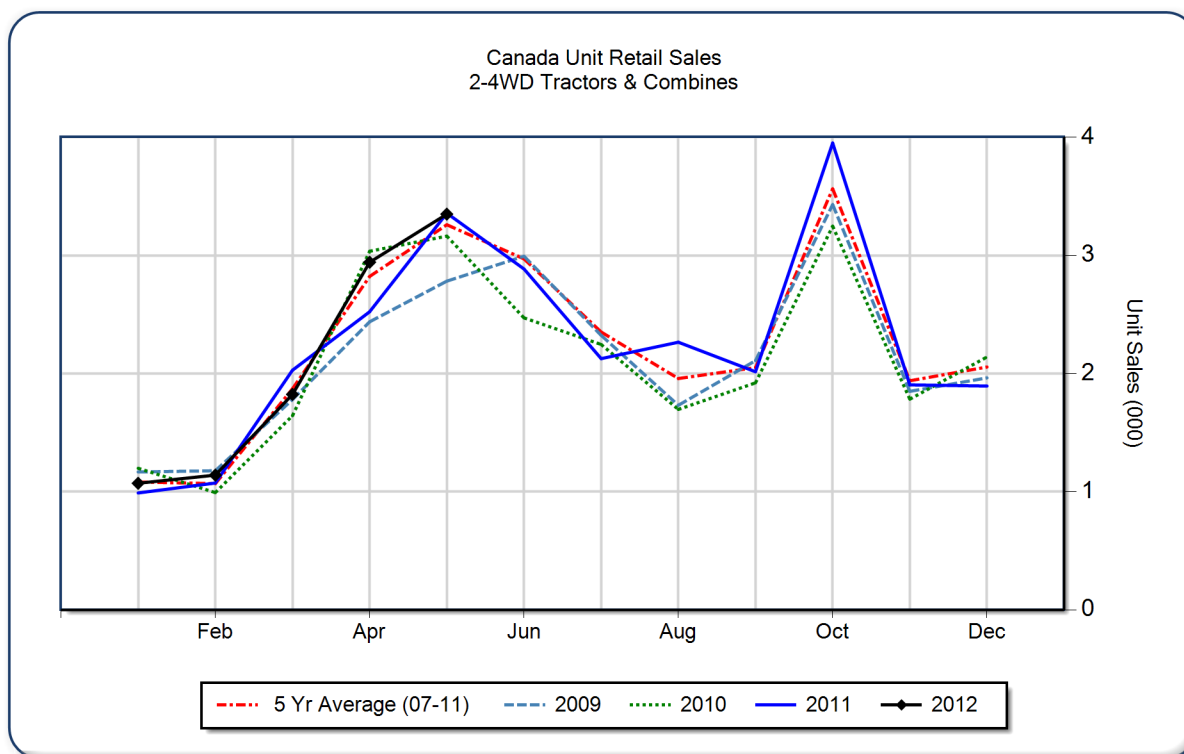


May 2012 Flash Report Canada Unit Retail Sales

Copyright, AEM. All rights reserved. If data is referenced, please acknowledge AEM as the source.

	May			YTD - May			Beginning Inventory May 2012
	2012	2011	%Chg	2012	2011	%Chg	
2WD Farm Tractors							
< 40 HP	1,915	1,774	7.9	4,617	4,431	4.2	9,375
40 < 100 HP	603	621	-2.9	2,436	2,339	4.1	3,691
100+ HP	482	502	-4.0	1,966	1,714	14.7	1,832
Total 2WD Farm Tractors	3,000	2,897	3.6	9,019	8,484	6.3	14,898
4WD Farm Tractors	181	180	0.6	718	672	6.8	395
Total Farm Tractors	3,181	3,077	3.4	9,737	9,156	6.3	15,293
Self-Prop Combines	168	280	-40.0	588	814	-27.8	644



These data are, in part, estimates that are subject to revisions when final detail data become available. Because of the seasonal nature of the industry, comparisons of monthly data from one period to another should be done with extreme caution. These data represent most, but not all, of the manufacturers in each product category being sold at retail in Canada.

Restricted Information from the Association of Equipment Manufacturers