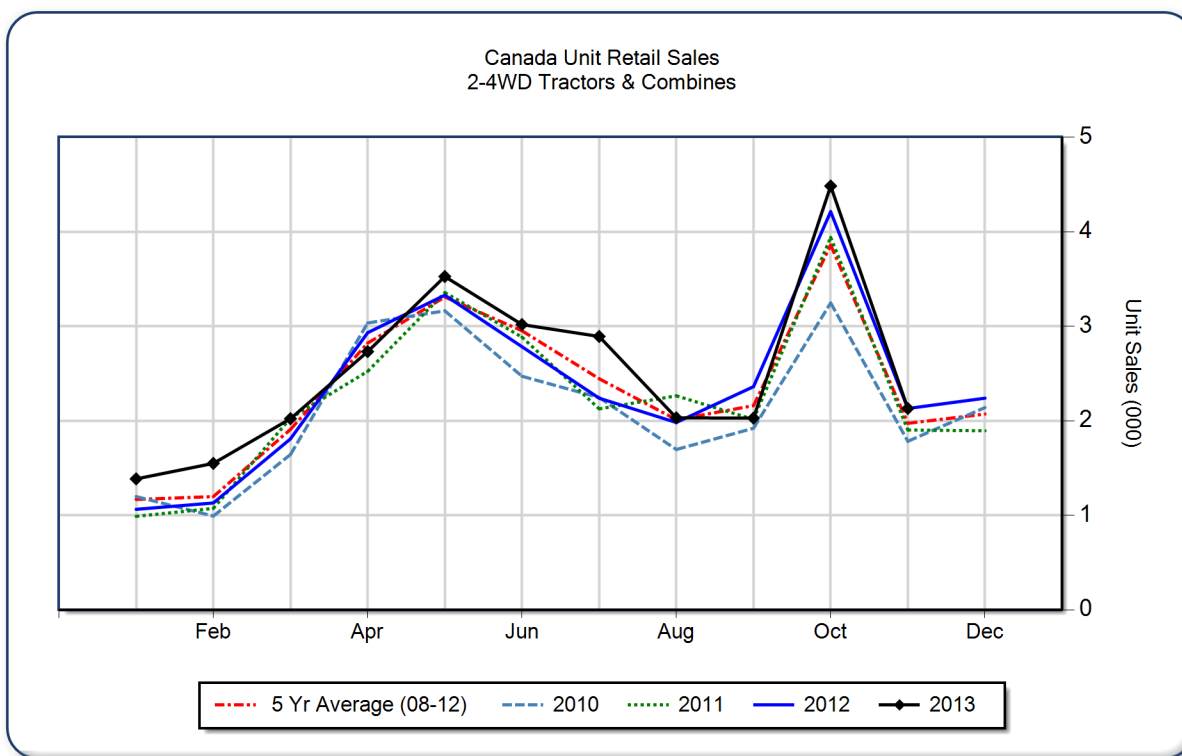


November 2013 Flash Report Canada Unit Retail Sales

Copyright, AEM. All rights reserved. If data is referenced, please acknowledge AEM as the source.

	November			YTD - November			Beginning Inventory Nov 2013
	2013	2012	%Chg	2013	2012	%Chg	
2WD Farm Tractors							
< 40 HP	829	852	-2.7	12,618	11,232	12.3	6,644
40 < 100 HP	563	570	-1.2	5,946	6,073	-2.1	3,660
100+ HP	359	363	-1.1	5,104	4,515	13.0	2,575
Total 2WD Farm Tractors	1,751	1,785	-1.9	23,668	21,820	8.5	12,879
4WD Farm Tractors	120	140	-14.3	1,442	1,455	-0.9	458
Total Farm Tractors	1,871	1,925	-2.8	25,110	23,275	7.9	13,337
Self-Prop Combines	259	205	26.3	2,687	2,696	-0.3	573



These data are, in part, estimates that are subject to revisions when final detailed data become available. Because of the seasonal nature of the industry, comparisons of monthly data from one period to another should be done with extreme caution. These data represent most, but not all, of the manufacturers in each product category being sold at retail in Canada.

Restricted Information from the Association of Equipment Manufacturers